

The Canadian Index of Well-being*

Measuring what matters

- GDP is a weak composite measure of societal progress.
- Goal was to create a comprehensive instrument that adequately, reliably and validly measures progress in a way that reveals the well-being or quality of life.
- Well-being → combines quality of life circumstances as well as person's perceptions, thoughts, feelings and reactions to those circumstances.

****Source: Michalos, A. et al. 2011. The Canadian Index of Wellbeing. Technical Report 1.0. Waterloo, ON: Canadian Index of Wellbeing and University of Waterloo.***

Players

Project Management Team

Expert Reviewers

**National Working Group /
Canadian Research Advisory Group**

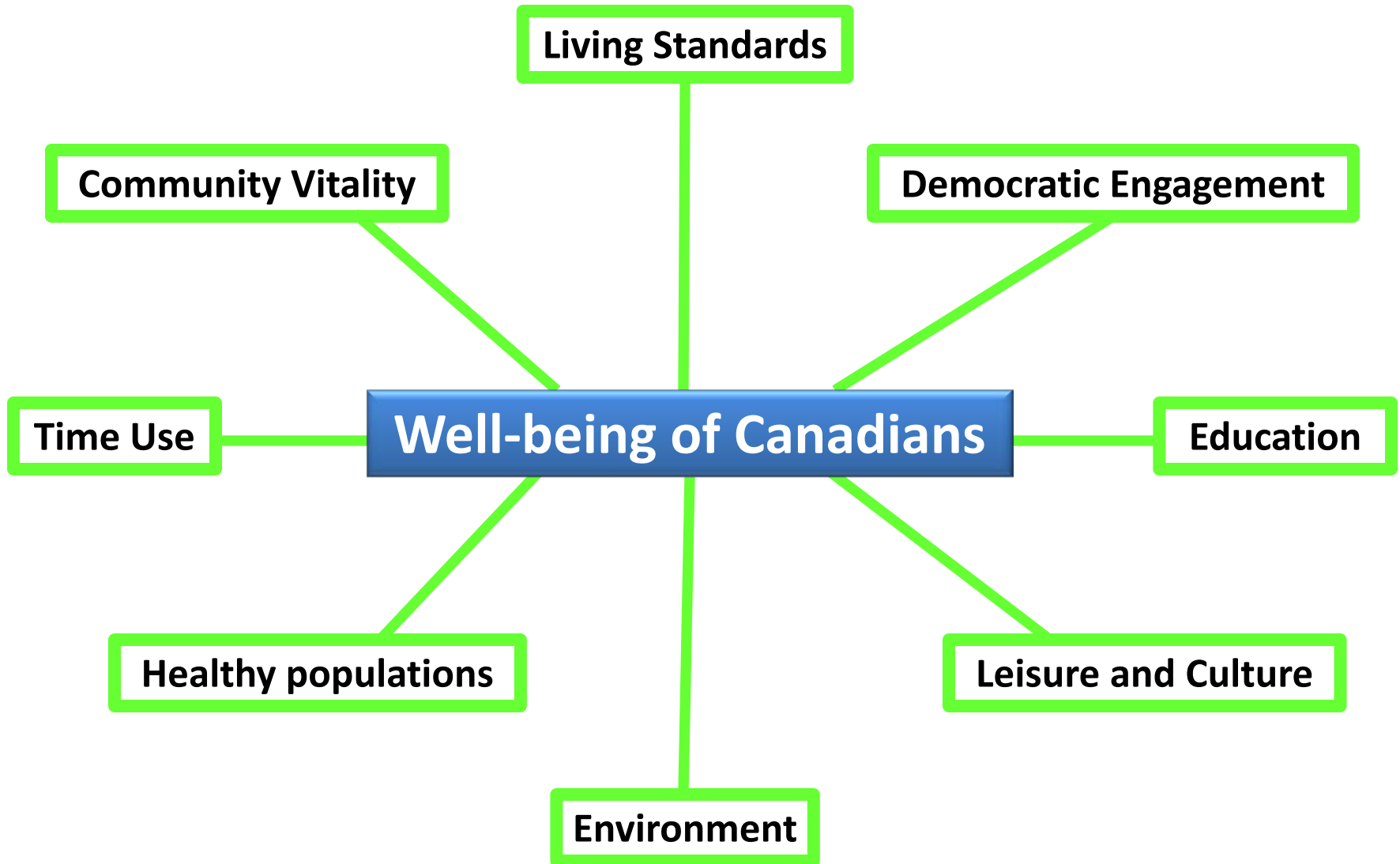
CIW construction team

Members of the Public

Process

- Selected 8 domains
 - Areas that define/capture essence of human well-being
- Identified and selected indicators
 - Drafted Acceptability Criteria and Critical Issues
 - Selected **headliner indicators** → **8 per domain**
- 1994 set as baseline year (= 100%)
- Calculated percentage change in indicator levels from baseline
 - Increase indicate improvement, decrease indicate deterioration
- Aggregation of percentage change levels by averaging
 - For each domain
 - For all domains to create the CIW
- Data at national level
- Aggregate trends over time

The 8 Domains



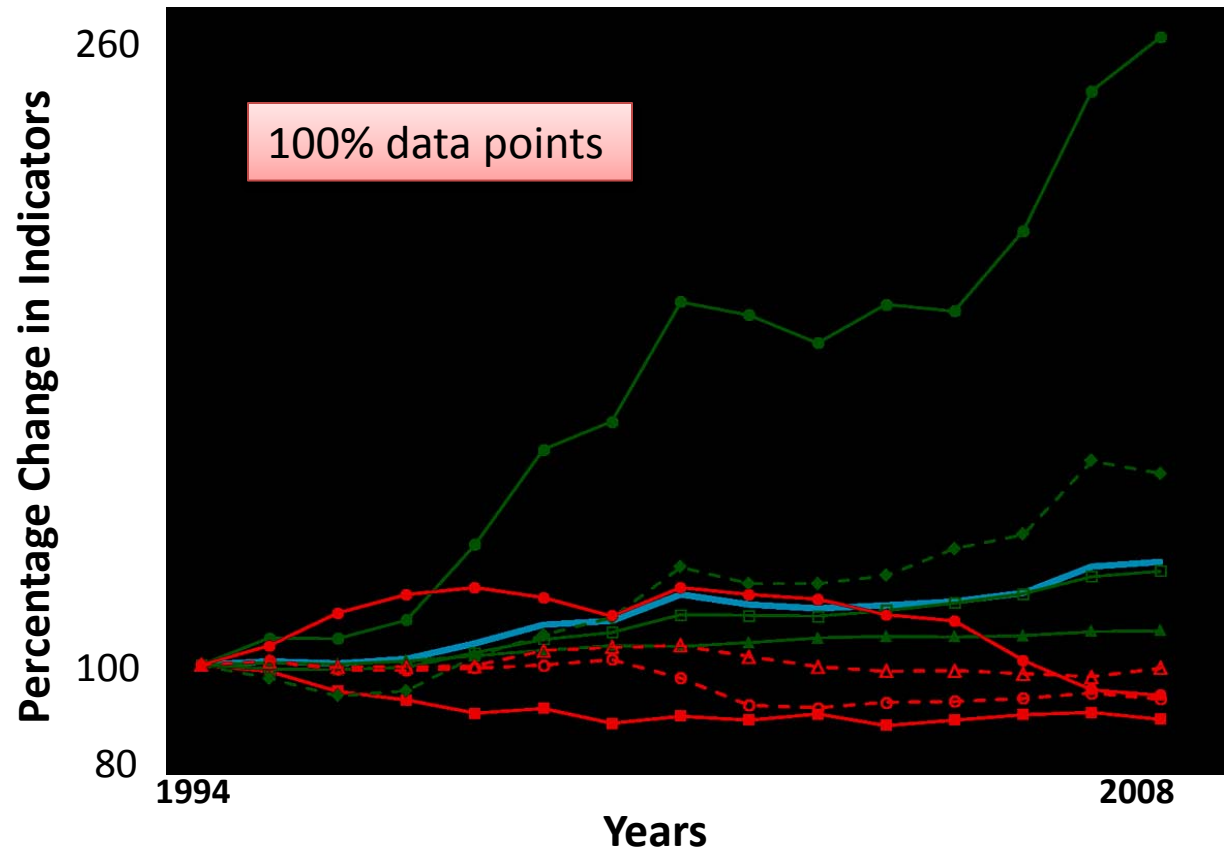
Living Standards Headliners

- Ratio of top to bottom quintile of economic families (after tax)
 - After tax median income of families
 - Incidence of persons in low income (LICO)
 - Scaled value of CSLS economic security
 - Incidence of long-term unemployment
 - Employment rate
 - CIBC index of employment quality
 - RBC housing affordability index
 - ~~Wealth distribution~~
 - ~~Persistence of low income~~
 - ~~Food Security~~
- Lack of consistent time series data

Healthy Populations Headliners

- Percentage self-rated health as excellent or very good
- Percentage with self-reported diabetes
- Life expectancy at birth, years
- Percentage of daily or occasional smokers among teens aged 12 to 19 years
- Percentage with probable depression
- Percentage rating patient health services as excellent or good
- Percentage aged 65 ears or more getting influenza immunization
- Avg. number of remaining years expected to be living in good health (avg HALE 15+)

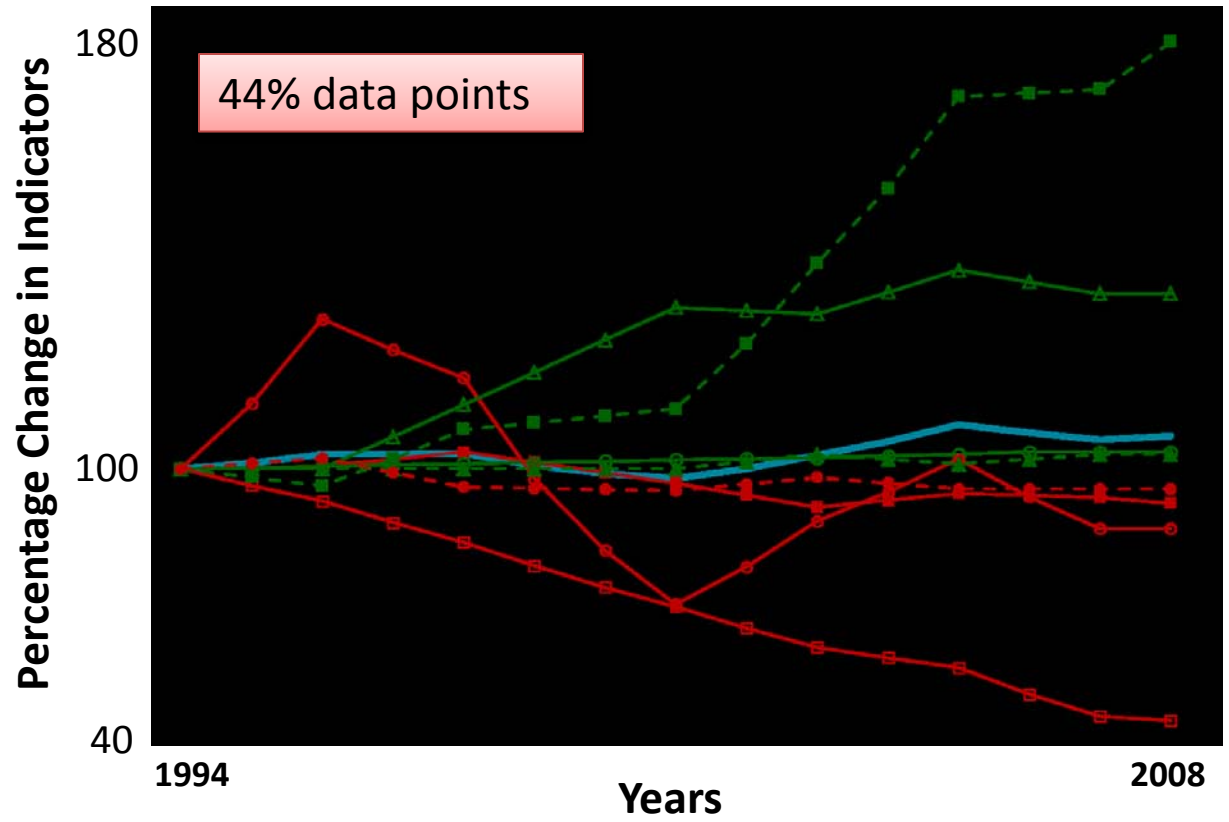
Living Standards Domain



- Overall LIVING STANDARDS
- Ration of top bottom quintile of economic families, after tax
- After tax median income of economic families (2009 \$)
- ◆ Percentage of persons in low income
- Scaled value of CSLs economic security
- Percentage labour force with long-term unemployment
- ▲ Percentage of labour force employed
- △ CIBC index of employment quality (1994 Q1 = 100)
- RBC housing affordability index

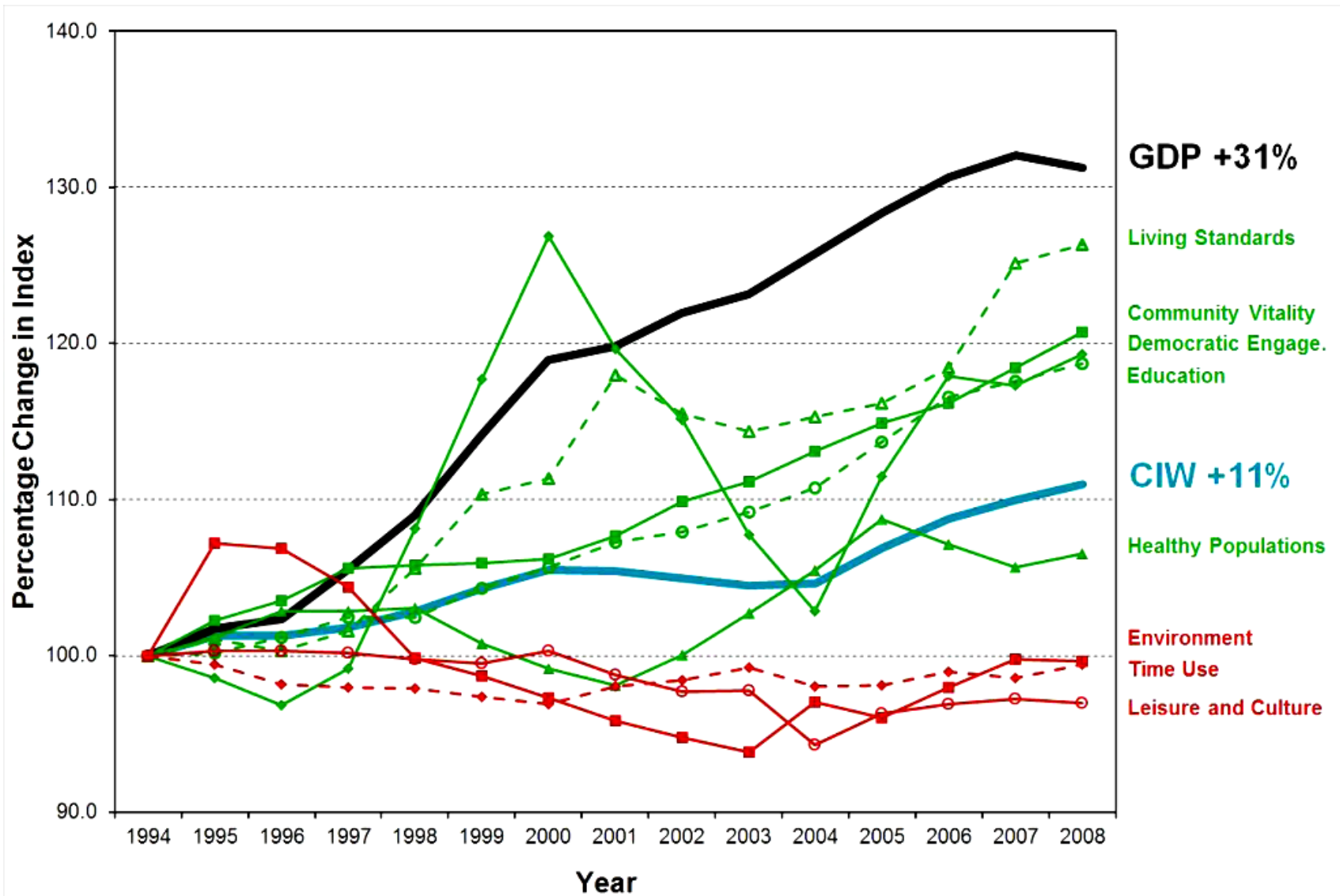
Muruvi, W. 2012. The Canadian Index of Well-being. A presentation to the Research, Learning and Evaluation Action Group of the Guelph Wellington Taskforce for Poverty Elimination. The Research Shop, University of Guelph.

Healthy Populations Domain



- Overall HEALTHY POPULATIONS
- Pct. Self-rated health as excellent or very good
- Pct. with self-reported diabetes
- Life expectancy at birth, years
- Pct. of daily or occasional smokers among teens 12 to 19 years
- Pct. with probable depression
- ▲ Pct. rating patient health services as excellent or good
- ▲ Pct. aged 65 years or more getting influenza immunization
- Avg. remaining years expected to be lived in good health (avg. HALE 15+)

Muruvi, W. 2012. The Canadian Index of Well-being. A presentation to the Research, Learning and Evaluation Action Group of the Guelph Wellington Taskforce for Poverty Elimination. The Research Shop, University of Guelph.



GDP +31%

Living Standards

**Community Vitality
Democratic Engage.
Education**

CIW +11%

Healthy Populations

**Environment
Time Use
Leisure and Culture**

Muruvi, W. 2012. The Canadian Index of Well-being. A presentation to the Research, Learning and Evaluation Action Group of the Guelph Wellington Taskforce for Poverty Elimination. The Research Shop, University of Guelph.

Implications for PTF

Challenges

- Change level affected by a number of technical issues
 - Choice of baseline year
 - Unit of analysis – e.g. person vs. household etc.
 - Choice of indicator measures
- Loss of information by use of change scores
- Data availability limitations
 - Time series data
 - Stratified population data: age, gender, ethnicity, income, geography etc.

Benefits/Potential

- Provides a comprehensive measure of well-being easy to communicate
 - Good for making a ‘sales pitch’
- Relatively simple to compute
- Trend data that is useful for planning and evaluating programs
 - Individual indicator change levels more useful for planning than the composite index
- **Reports provide a wealth of info**
 - Ideas on indicators to look at
 - Details on sources of data

The PTF has an interest in specific indicators , they help guide planning of the group's activities:

Why do we need a Poverty Elimination Task Force?

In our community:

- 1 in 10 children is living below the poverty line
- Ontario Works cases increased over 13% in 2008
- over 1,600 people visited a shelter in 2008
- food bank usage has increased by over 28% in the last four years

Source: Guelph Wellington Task Force for Poverty Elimination website

Domain Reports

- **Community Vitality** by Katherine Scott
- **Democratic Engagement** by Kelley Moore, Lenore Swystun, Bill Holden, Heather Bernardin, Beth Dunning, and Paul Graham
- **Education** by Martin Guhn, Anne M. Gadermann, and Bruno D. Zumbo
- **Environment** by Alexis Morgan
- **Healthy Populations** by Ronald Labonté, Nazeem Muhajarine, Brandace Winqvist, and Jacqueline Quail
- **Leisure and Culture** by Bryan Smale, Holly Donohoe, Clem Pelot, Agnes Croxford, and Denis Auger
- **Living Standards** by Andrew Sharp and Jean-François Arsenault
- **Time Use** by Ann-Sylvia Brooker and Ilene Hyman